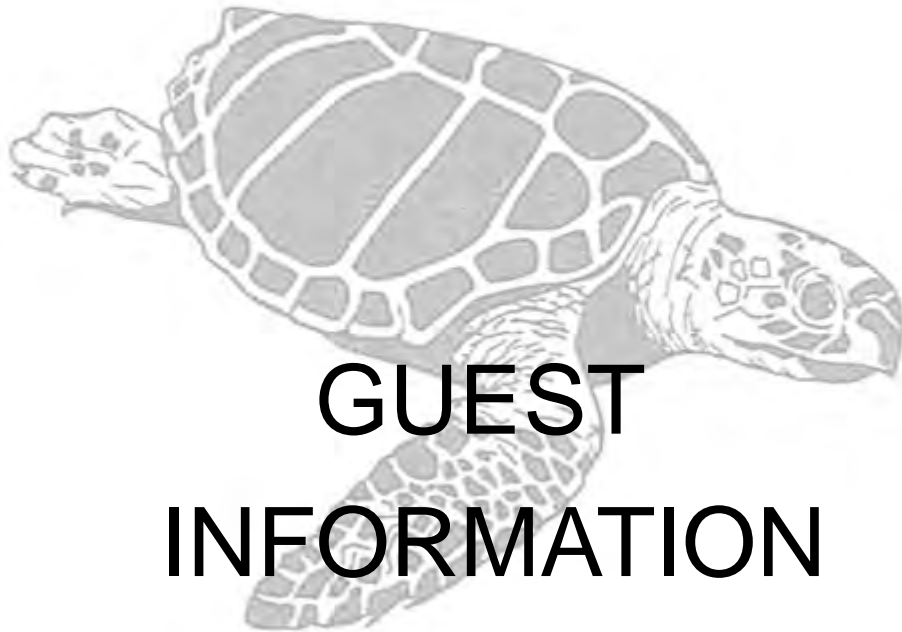




RELEASE AND UNWIND

# Jupiter

3238 Casseekey Island Road  
Jupiter, FL 33477



## GUEST INFORMATION

Scan this QR code to view  
the Guest Information Packet online



Toll Free: 1-888-LOGGER2

Direct: 561-747-8980 | Fax: 561-747-8986



RELEASE AND UNWIND

## Directions to Loggerhead Club & Marina® – Jupiter

### By Water: (VHF Channel # 16)

- You can access Loggerhead Club & Marina - Jupiter by water directly from the IntraCoastal Waterway - we are located on the west side of the channel about 1 mile south of the Jupiter Inlet or approximately ½ mile south of the Indiantown Road bridge.

### By Land:

- You can access Loggerhead Club & Marina - Jupiter by land by exiting I-95 or Florida's Turnpike in the northern Palm Beach area at the Indiantown Road exit. Travel East on Indiantown Road, once you pass over the railroad tracks turn right on Alt. A1A for approximately 1/2 mile just past the first stoplight and turn left crossing the median to the main entrance for the Jonathan's Landing development. Stop at the guard gate and follow the directional signs to the marina.

## Marina Information

### Dock/Rack Layout

- Wet slips for boats up to 60 feet in length.
- Indoor dry storage for 352 boats up to 35 feet in length, and additional outdoor dry storage for boats up to 40 feet in length.

### Marine Fuel

- Loggerhead Club & Marina® - Jupiter sells ValvTect marine specific 90 octane non ethanol gasoline, offered exclusively at all Loggerhead Club & Marina locations. We also offer our Members a discount on all fuel purchases. Contact the Harbor Master for more information.

### On- Site Utilities

- Free on-site pump-out services for members

### Marina Depth

- The marina is located immediately adjacent to the Intracoastal Waterway and the entrance has approximately a 7 foot draft at mean low tide.



## RELEASE AND UNWIND

### In the Event of an After-Hours Emergency

- The marina office phones are forwarded nightly to an answering service. The service will contact the harbormaster or another Loggerhead Club & Marina official in the event of an emergency. If the incident involves an injury or the law is being broken, please dial 911. A call to the marina office will also be appreciated (561) 747-8980. VHF Channel #

### Local Fixed Bridges

- No fixed bridges to the North - instead both the Indiantown Road Bridge and the US #1 bridge are bascules opening on regular schedules. Traveling south, there are bascules at Donald Ross Road, PGA Boulevard and another US #1 - there is a fixed bridge at Blue Heron Boulevard before you reach the Palm Beach inlet but it is 65 foot clearance at mean low tide.

### In the Area:

#### Airports

Palm Beach International Airport	1000 Palm Bch Intl Airport Unit 125, West Palm Beach, FL Take Blue Heron to I-95 South. Palm Beach Int. Airport will be the next exit after Okeechobee Blvd.	(561) 471-7400
Ft. Lauderdale International Airport	100 Aviation Blvd, Fort Lauderdale, FL	(954) 359-1200
Miami International Airport	N.W. 20th Street & Lejune Road, Miami, FL	(305) 871-4100

#### Drugstores

CVS	14000 US Highway 1, Juno Beach, FL 33408	(561) 622-9414
Publix Pharmacy	5500 Military Trl Ste 25, Jupiter, FL	(561) 799-3190

#### Entertainment

Cobb Movie Theatre	201 N US Highway 1, Jupiter, FL	(561) 747-7333
Downtown at the Gardens	11701 Lake Victoria Gdns # 2202, Palm Beach Gdns, FL	(561) 340-1600



**RELEASE AND UNWIND**

### Golf and Tennis

North Palm Beach Municipal	951 US Highway 1, North Palm Beach, FL	(561) 691-3433
Johnathan's Landing Golf and Tennis	16823 Captain Kirle Dr, Jupiter, FL	(561) 748-7406
PGA National Golf Club	16823 Captain Kirle Dr, Jupiter, FL	(561) 748-7406

### Grocery Stores

Publix	4060 S US Highway 1, Jupiter, FL	(561) 694-2662
Carmine's Gourmet Market	2401 Pga Blvd Ste 172, Palm Beach Gardens, FL	(561) 775-0105
Publix Greenwise	11231 Legacy Ave, Palm Beach Gardens, FL	(561) 514-5175

### Health Care

Jupiter Medical Center	1210 S Old Dixie Hwy, Jupiter, FL	(561) 747-2234
St. Mary's Medical Center ER	901 45th St, West Palm Beach, FL	(561) 844-6300
North Palm Beach Animal Clinic	719 Northlake Blvd, North Palm Beach, FL	(561) 844-0844
Jupiter Animal Hospital	426 W Indiantown Rd, Jupiter, FL	(561) 746-8888

### Health Clubs

LA Fitness	11231 Legacy Ave, Palm Beach Gardens, FL	(561) 273-7080
Gold's Gym	4540 Donald Ross Rd, Palm Beach Gardens, FL	(561) 799-1515

### Hotels

Homewood Suites Hilton	4700 Donald Ross Rd, Palm Beach Gardens, FL	(561) 622-7799
Juno Beach Hampton Inn	13801 US Highway 1, Juno Beach, FL	(561) 626-9090

### Liquor Stores

Juno Beach Liquor	13977 US Highway 1, Juno Beach, FL	(561) 624-9070
Reserve Wine & Spirits	5440 Military Trl Ste 3, Jupiter, FL	(561) 776-1663

**Toll Free: 1-888-LOGGER2**

**Direct: 561-747-8980 | Fax: 561-747-8986**



## RELEASE AND UNWIND

### Mail & Shipping

US Post Office	3330 Fairchild Gardens Ave, Palm Beach Gardens, FL	(561) 799-4068
UPS Store	11231 US Highway 1, North Palm Beach, FL	(561) 691-4095

### Places of Interest

Loggerhead Marine life Center	14200 US Highway 1, North Palm Beach, FL	(561) 627-8280
Jupiter Inlet Lighthouse Museum	500 Captain Armours Way, Jupiter, FL	(561) 747-8380
The Gardens Mall	3101 Pga Blvd, Palm Beach Gardens, FL	(561) 775-7750
Palm Beach International Raceway	17047 Bee Line Hwy, Jupiter, FL	(561) 622-1400
Ground Swell Surf Shop	811 Donald Ross Rd, Juno Beach, FL	(561) 622-7878
Burt Reynolds Museum	100 N US Highway 1 Ste 102, Jupiter, FL	(561) 743-9955

### Marine Sales

<b>Exclusive Yacht Group</b>	<b>140 Intracoastal Pointe Drive Suite 110, Jupiter, FL</b>	<b>(561) 745-2780</b>
HMY Yacht Sales	2401 PGA Blvd Ste 182, Palm Beach Gardens, FL	(561) 775-6000
MacGregor Yachts	2352 PGA Blvd, Palm Beach Gardens, FL	(561) 799-6511

### Marine Services

J&K Marine Services	On-Site	
Sea Tow		(561) 844-8056
Bill Clark Marine	2116 Avenue B, Riviera Beach, FL	(561) 842-4995
Florida Rigging & Hydraulics	3905 Investment Ln Ste 9, Riviera Beach, FL	(561) 863-7444

Toll Free: 1-888-LOGGER2

Direct: 561-747-8980 | Fax: 561-747-8986



**RELEASE AND UNWIND**

### Restaurants

<b>Out of the Blue Restaurant</b>	<b>On Site</b>	<b>(561) 633-1330</b>
Yard House	11701 Lake Victoria Gardens Ave, Palm Beach Gardens, FL	(561) 691-6901
Food Shack	103 S US Highway 1 Ste D3, Jupiter, FL	(561) 741-3626
Cabo Flats	11701 Lake Victoria Gardens Ave, Palm Beach Gardens, FL	(561) 624-0024
Big Apple Pizza & Pasta	11249 US Highway 1, North Palm Beach, FL	(561) 627-5001
Bagel Boyz	5430 Military Trl Ste 80, Jupiter, FL	(561) 624-9884
Lazy Loggerhead Café	401 N Highway A1a Alt, Jupiter, FL	(561) 747-1134
Square Grouper	1111 Love St, Jupiter, FL	(561) 575-0252
Guanabana's	960 N Highway A1A, Jupiter, FL 33477	(561) 747-8878
The Thirsty Turtle	13981 US Highway 1, Juno Beach, FL	(561) 627-8991
Outback Steak House	10933 N Military Trl, West Palm Beach, FL	(561) 625-0793
Dunkin Doughnuts	803 Donald Ross Rd, Juno Beach, FL	(561) 624-0103

### Transportation Services

Enterprise Rent-a-Car	280 Toney Penna Dr Ste 5, Jupiter, FL	(561) 575-3262
Budget Rent a Car	211 Commerce Way, Jupiter, FL	(561) 746-1209
Blue Star Taxi Service		(561) 844-7366
Dave's Taxi		(561) 743-8642
All American Taxi		(561) 651-7070
An Ultimate Limousine	975 Military Trl, Jupiter, FL	(561) 575-7353
Palm Beach Bicycle Trail Shop	Palm Beach Bicycle Trail Shop 233 Sunrise Avenue Palm Beach, Florida 33480	(561) 659-4583
Lake Park Bicycles	1438 10th St Lake Park, FL 33403	(561) 842-0303
J-Town Bicycle	126 Center St Ste B1, Jupiter, FL	(561) 575-2453

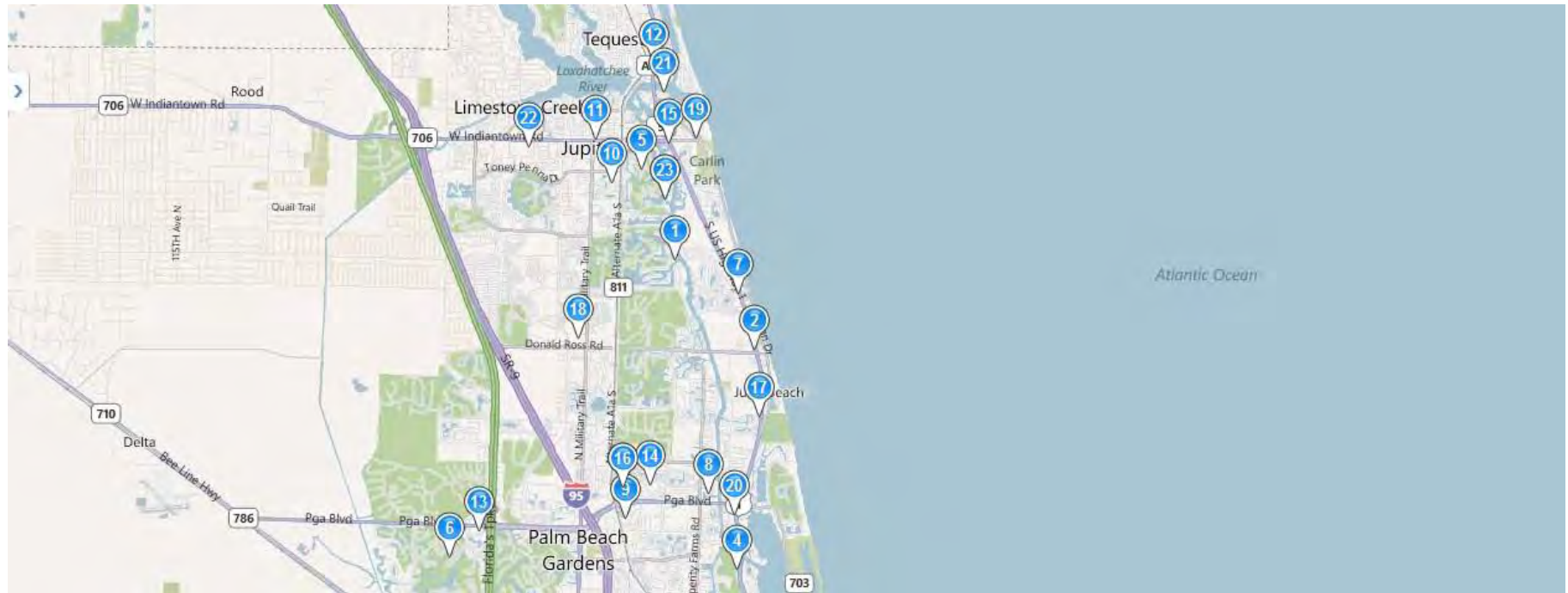
### US Customs & Immigration

US Immigration and Customs Enforcement – Rivera Beach	1 East 11th Street, Suite 323, Box #4, Riviera Beach, FL	(561) 844-1703
---	--	----------------

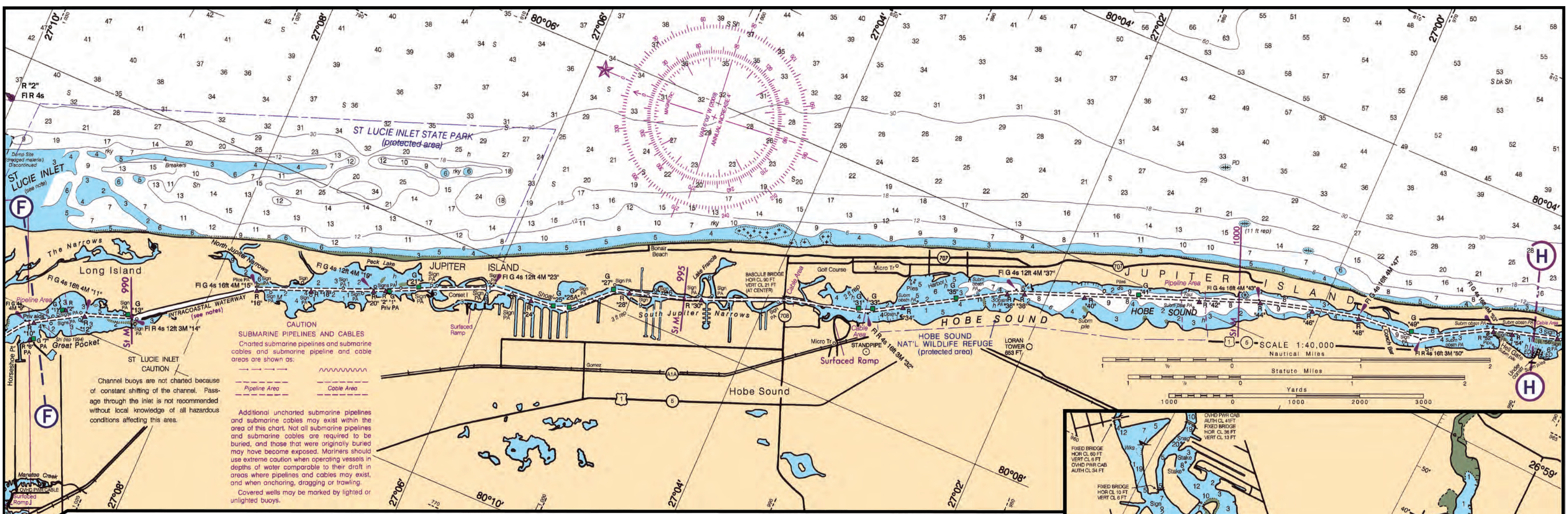
Toll Free: 1-888-LOGGER2

Direct: 561-747-8980 | Fax: 561-747-8986

## Jupiter Area Map



- 1. Loggerhead Club & Marina**  
3238 Casseekey Island Rd.
- 2. CVS Pharmacy**  
14000 US Highway 1, Juno Beach, FL
- 3. Downtown At the Gardens**  
11701 Lake Victoria Gdns # 2202, Palm Beach Gdns, FL
- 4. North Palm Beach Golf Course**  
951 US Highway 1, West Palm Beach, FL
- 5. Jonathan's Landing Golf & Tennis**  
16823 Captain Kirle Dr, Jupiter, FL
- 6. PGA National Golf**  
400 Avenue Of Champions, Palm Beach Gardens, FL
- 7. Publix Super Market**  
4060 S US Highway 1, Jupiter, FL
- 8. Carmine's Gourmet Market**  
2401 Pga Blvd Ste 172, Palm Beach Gardens, FL
- 9. Publix Super Market**  
11231 Legacy Ave, Palm Beach Gardens, FL
- 10. Jupiter Medical Ctr**  
1210 S Old Dixie Hwy, Jupiter, FL
- 11. Jupiter Animal Hospital**  
426 W Indiantown Rd, Jupiter, FL
- 12. Jupiter Inlet Lighthouse Store**  
500 Captain Armours Way, Jupiter, FL
- 13. LA Fitness**  
7100 Fairway Dr Ste 49, Palm Beach Gardens, FL
- 14. Gardens Mall**  
3101 Pga Blvd, Palm Beach Gardens, FL
- 15. Food Shack**  
103 S US Highway 1 Ste D3, Jupiter, FL
- 16. Yard House**  
11701 Lake Victoria Gardens Ave, Palm Beach Gardens, FL
- 17. Captain Charlies**  
12846 US Highway 1, Juno Beach, FL
- 18. Bagel Boyz**  
5430 Military Trl Ste 80, Jupiter, FL
- 19. Lazy Loggerhead Cafe**  
401 N Highway A1a Alt, Jupiter, FL
- 20. Big Apple Pizza & Pasta**  
11249 US Highway 1, North Palm Beach, FL
- 21. Square Grouper Tiki Bar**  
1111 Love St, Jupiter, FL
- 22. Budget Rent A Car**  
211 Commerce Way, Jupiter, FL
- 23. Out of the Blue Restaurant –located onsite**  
3238 Casseekey Island Rd, Jupiter, FL



**DISCLAIMER**  
 This chart is published and distributed by U.S. Chart Services, Inc. U.S. Chart Services, Inc. has copied, cropped and edited data from OceanGrafix charts to produce this chart. Some of the copied data is copyright protected by OceanGrafix and is used with permission. OceanGrafix makes no claims that the copied data is accurate or suitable for the intended use of the recipient or purchaser and offers no warranty concerning the chart's fitness for use. The data contained in this chart may not be reproduced in any form without written permission from U.S. Chart Services, Inc. and OceanGrafix. OceanGrafix, U.S. Chart Services, Inc., as well as advertisers and distributors of this product can not be responsible for any errors or omissions which may occur in the printing of this imaged product. All persons using this product are CAUTIONED to use the practices of good seamanship and consult Notice to Mariners when using this information.

**ABBREVIATIONS**  
 (For complete list of Symbols and Abbreviations, see Chart No. 1.)

**NOTE A**  
 Navigation regulations are published in Chapter 2, U.S. Coast Pilots 4 and 5. Additions or revisions to Chapter 2 are published in the Notice to Mariners. Information concerning the regulations may be obtained at the Office of the Commander, 7th Coast Guard District in Miami, Florida, or at the Office of the District Engineer, Corps of Engineers in Jacksonville, Florida. Refer to charted regulation section numbers.

**NOTE B**  
 The aids are private and positions are approximate.

**AIDS TO NAVIGATION**  
 Consult U.S. Coast Guard Light List for supplemental information concerning aids to navigation.

**WARNING**  
 The prudent mariner will not rely solely on any single aid to navigation, particularly on floating aids. See U.S. Coast Guard Light List and U.S. Coast Pilot for details.

**CAUTION**  
 Temporary changes or defects in aids to navigation are not indicated on this chart. See Local Notice to Mariners.

**RADAR REFLECTORS**  
 Radar reflectors have been placed on many floating aids to navigation. Individual radar reflector identification on these aids has been omitted from this chart.

**CAUTION**  
 Improved channels shown by broken lines are subject to shoaling, particularly at the edges.

**SUPPLEMENTAL INFORMATION**  
 Consult U.S. Coast Pilots 4 & 5 for important supplemental information.

**LOGGERHEAD CLUB & MARINA**  
 Jupiter, FL  
 561-747-8980 • Toll Free: 888-LOGGER2  
 www.loggerheadclubandmarina.com

